

BRAND name: **HEX**



HEX RING type **TINNED COPPER** lugs



CAT NO	STUD HOLE	PACKING Pkt	CAT NO	STUD HOLE	PACKING per box
RING : 1.5 SQMM			RING : 35 SQMM		
1.5 Sqmm HR-7003	4.2	200	35 Sqmm HR-7133	6.4	100
1.5 Sqmm HR-7005	5.2	200	35 Sqmm HR-7038	8.2	100
1.5 Sqmm HR-7007	6.4	200	35 Sqmm HR-7039	10.2	100
RING: 2.5 SQMM			RING : 50 SQMM		
2.5 Sqmm HR-7008	3.7	200	35 Sqmm HR-7135	10.2	100
2.5 Sqmm HR-7009	4.2	200	35 Sqmm HR-7040	12.7	100
2.5 Sqmm HR-7010	5.2	200	PACKING		
2.5 Sqmm HR-7011	6.4	200	50 Sqmm HR-7136	8.2	50
2.5 Sqmm HR-7013	8.2	200	50 Sqmm HR-7137	10.2	50
2.5 Sqmm HR-7015	10.2	200	50 Sqmm HR-7041	10.2	50
RING : 4.6 SQMM			RING : 70 SQMM		
4.6 Sqmm HR-7155	4.2	200	50 Sqmm HR-7042	12.7	50
4.6 Sqmm HR-7050	5.2	200	50 Sqmm HR-7139	16.2	50
4.6 Sqmm HR-7017	6.4	200	RING : 95 SQMM		
4.6 Sqmm HR-7018	8.2	200	70 Sqmm HR-7140	10.2	50
4.6 Sqmm HR-7020	8.2	200	70 Sqmm HR-7141	12.7	50
4.6 Sqmm HR-7023	10.2	200	70 Sqmm HR-7142	16.2	50
RING : 10 SQMM			RING : 120 SQMM		
10 Sqmm HR-7120	6.4	200	RING 120 Sqmm HR-7146		
10 Sqmm HR-7121	8.2	200	RING 120 Sqmm HR-7148		
10 Sqmm HR-7027	10.2	200	RING : 150 SQMM		
10 Sqmm HR-7123	10.2	200	RING 150 Sqmm HR-7149		
RING : 16 SQMM			RING 150 Sqmm HR-7045		
16 Sqmm HR-7029	6.2	100	RING 150 Sqmm HR-7046		
16 Sqmm HR-7030	8.2	100			
16 Sqmm HR -7032	10.2	100			
16 Sqmm HR -7128	10.2	100			
16 Sqmm HR-7033	12.7	100			
RING : 25 SQMM					
25 Sqmm HR-7156	6.4	100			
25 Sqmm HR-7034	8.2	100			
25 Sqmm HR-7035	10.2	100			
25 Sqmm HR-7131	10.2	100			
25 Sqmm HR-7132	10.2	100			
25 Sqmm HR-7037	12.7	100			

RING type **INSULATED COPPER LUGS** in **HEX** make



HEX RING type **INSULATED TINNED COPPER** lugs

INSULATED RING type	STUD	PACKING
---------------------	------	---------

COPPER lugs in HEX make	HOLE	per box
RING INSULATED 1.5 SQMM		PACKING
1.5 RING INSULATED HRI-7055	3.7	200
1.5 RING INSULATED HRI-7061	4.2	200
1.5 RING INSULATED HRI-7062	5.2	200
1.5 RING INSULATED HRI-7066	6.2	200
RING INSULATED 2.5 SQMM	HOLE	PACKING
2.5 RING INSULATED HRI-7069	3.7	200
2.5 RING INSULATED HRI-7071	4.2	200
2.5 RING INSULATED HRI-7072	5.2	200
2.5 RING INSULATED HRI-7074	6.2	200
RING INSULATED 4.6 SQMM	HOLE	PACKING
4.6 RING INSULATED HRI-7083	4.2	200
4.6 RING INSULATED HRI-7089	6.2	200

PIN type **COPPER** lugs in **HEX** make



PIN type COPPER lug in HEX make	CAT NO	PACKING per PACKET
COPPER PIN TYPE LUGS	CODE	
PIN 1.5 sqmm	HP-9	100
PIN 2.5 sqmm	HP-1	100
PIN 4.0 SQMM	HP-3	100
PIN 6.0 SQMM	HP-5	100
PIN 10 SQMM	HP-7	100
PIN 16 SQMM	HP-8	100
PIN 25 SQMM	HP-10	100
PIN 35 SQMM	HP-11	100
PIN 50 SQMM	HP-12	50
PIN 70 SQMM	HP-13	50
PIN 95 SQMM	HP-14	50

PIN type **INSULATED COPPER** lugs in **HEX** make



	CAT.NO.	
COPPER PIN INSULATED	CODE	PACKING
INSULATED PIN 1.5 sqmm	HPI-17	200 nos
INSULATED PIN 2.5 sqmm	HPI-18	200 nos
INSULATED PIN 4.0 sqmm	HPI-20	200 nos

FORK type **COPPER** lugs in **HEX** make



	CAT.NO.	
COPPER FORK type LUGS	CODE	PACKING
FORK 1.5 SQMM	HF-7249	200 nos
FORK 2.5 SQMM	HF-7251	200 nos
FORK 4.6 SQMM	HF-7253	200 nos
FORK 10. SQMM	HU-7867	200 nos
FORK 16. SQMM	HU-7870	200 nos

FORK type **INSULATED COPPER** lugs in **HEX** make



	CAT.NO.	
COPPER FORK INSULATED	CODE	PACKING
FORK INSULATED 1.5 sqmm	HFI-7926	200
FORK INSULATED 2.5 sqmm	HFI-7928	200
FORK INSULATED 4.6 sqmm	HFI-7931	200

FERRULE type **COPPER** lugs in **HEX** make

	CAT.NO.	
COPPER IN-LINE FERRULE type	CODE	PACKING
COPPER FERRULE 1.5 SQMM	HI-453	200
COPPER FERRULE 2.5 SQMM	HI-454	200
COPPER FERRULE 4-6 SQMM	HI-455	200
COPPER FERRULE 10 SQMM	HI-460	200
COPPER FERRULE 16 SQMM	HI-461	100
COPPER FERRULE 25 SQMM	HI-484	100
COPPER FERRULE 35 SQMM	HI-485	100
COPPER FERRULE 50 SQMM	HI-477	50
COPPER FERRULE 70 SQMM	HI-478	50
COPPER FERRULE 95 SQMM	HI-479	50



END SEALING FERRULES (INSULATED TERMINAL END CONNECTORS)

SL.NO	INSULATED TERMINAL END (END SEALING FERRULES)	PACKING /Pkt
1	EH LUGS E0508 (0.5sqmm-Length 8mm)	100nos
2	EH LUGS E 0510 (0.5sqmm- Length 10mm)	100nos
3	EH LUGS E7508 (0.75sqmm- Length 8mm)	100nos
4	EH LUGS E7510 (0.75sqmm- Length 10mm)	100nos
5	EH LUGS E1008 (1.0sqmm- Length 8mm)	100nos
6	EH LUGS E1010 (1.0sqmm- Length 10mm)	100nos
7	EH LUGS E1508 (1.5sqmm- Length 8mm)	100nos
4	EH LUGS E1510 (1.5sqmm- Length 10mm)	100nos
9	EH LUGS E2508 (2.5sqmm- Length 8mm)	100nos

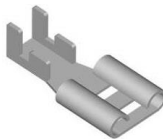
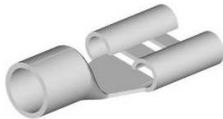
10	EH LUGS E2510 (2.5sqmm- Length 10mm)	100nos
11	EH LUGS E2512 (2.5sqmm- Length 12mm)	100nos
12	EH LUGS E4009 (4.0sqmm- Length 9mm)	100nos
13	EH LUGS E4012 (4.0sqmm- Length 12mm)	100nos
14	EH LUGS E6012 (6.0sqmm- Length 12mm)	100nos
15	EH LUGS E1012 (10.0sqmm- Length 12mm)	100nos



SL.NO	TWIN TERMINAL ENDS (INSULATED) (END SEALING FERRULES)	PRICE LIST Rs. PER each	PACKING /Pkt
1	EH LUGS TE0508 (0.5sqmm-Length 8mm)	1.25	100nos
2	EH LUGS TE7508 (0.75sqmm- Length 8mm)	1.40	100nos
3	EH LUGS TE1008 (1.0sqmm- Length 8mm)	1.40	100nos
4	EH LUGS TE1508 (1.5sqmm- Length 8mm)	1.50	100nos
5	EH LUGS TE2510 (2.5sqmm- Length 10mm)	170	100nos



MALE FEMALE **SNAP ON TERMINAL**
(FOLDED)



SNAP ON TERMINAL
(OPEN END)



SEMI INSULATED
SNAP ON TERMINAL (FEMALE)



FULLY INSULATED
SNAP ON TERMINAL (FEMALE)



INSULATED **BULLET TERMINALS** MALE FEMALE



INSULATED **BUTT TERMINALS**



CE2X CLOSED-END Wire crimp Terminals



SL.NO	TERMINAL END LUGS	CAT.NO.
1	SNAP ON TERMINAL LUG (MALE) (Without Insulated)	SOYNIA SE-092 (HEAVY)
2	SNAP ON TERMINAL LUG (FOLDED CLOSED END) (FEMALE) (IMPORTED)	
3	SNAP ON TERMINAL LUG (OPEN END) (FEMALE) (IMPORTED)	
4	SNAP TERMINAL LUG (FOLDED/OPEN CLOSED END) (SOYNIA make)	SE-064 & SE-065
5	SEMI-INSULATED SNAP ON TERMINAL LUG (MALE)	MDD1-250 & MDD2-250
6	SEMI-INSULATED SNAP ON TERMINAL LUG (FEMALE)	FDD1-250 & FDD2-250
7	SNAP ON TERMINAL LUG (FULLY INSULATED) (FEMALE)	FDFD1-250 & FDFD2-250
8	INSULATED MALE BULLET TERMINALS	MPD1-156 & MPD2-156
9	INSULATED FEMALE RECEPTACLE (FEMALE BULLET TERMINALS)	FRD1-156 & FRD2-156
10	INSULATED BUTT TERMINALS	BV1.25 & BV2
11	CE2X CLOSED END WIRE CONNECTORS	CE2X